



1950 STAFFORDSHIRE RD

MISSOURI CITY, TX 77489

STAFFORDSHIRE RD

+/-13.774 ACRES

AVAILABLE FOR SALE

SIZE - +/-13.774 ACRES

PRICE - CALL FOR PRICING

FOR MORE INFORMATION

FARID CHATUR

832-685-2739

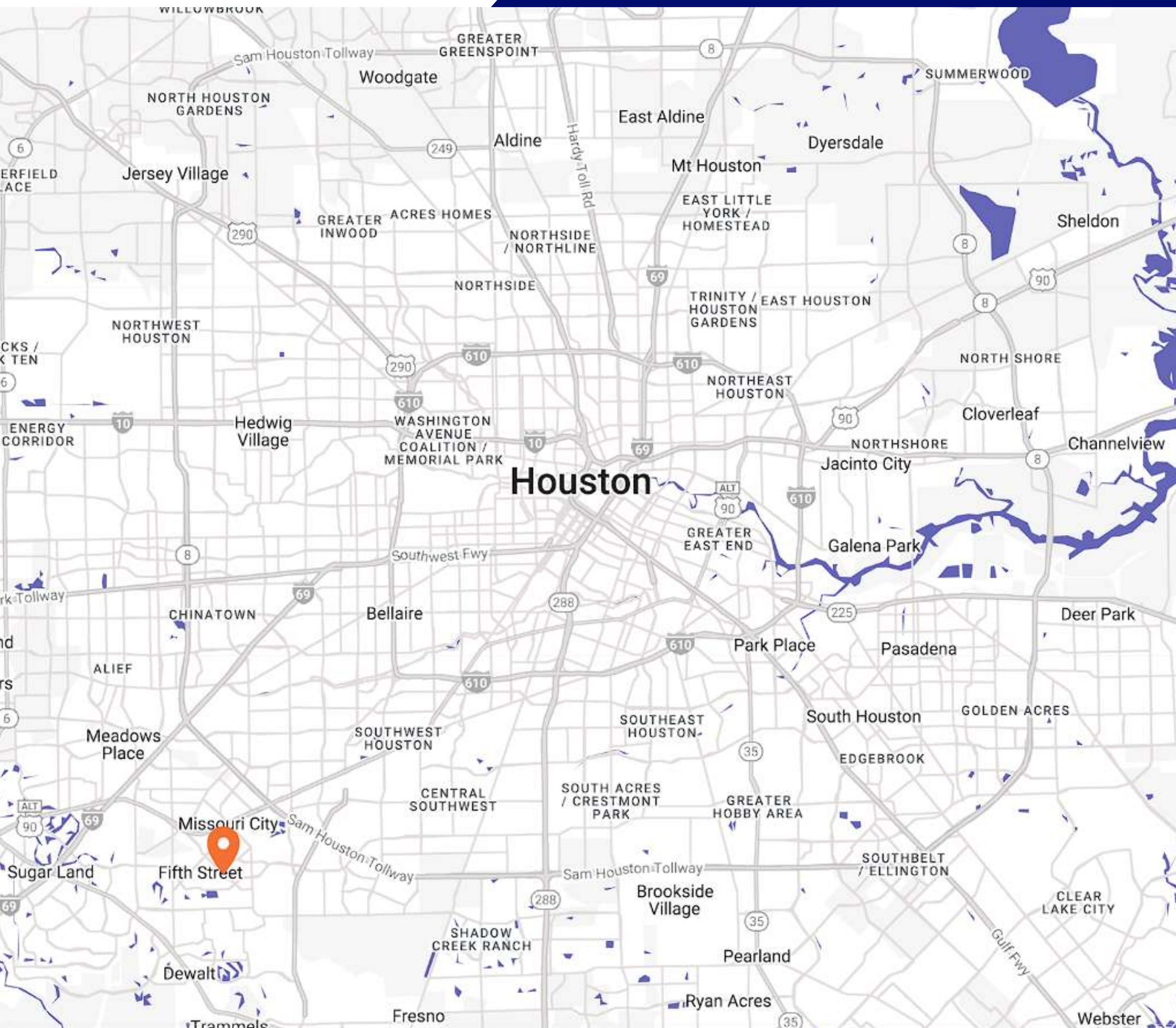
FARID@APEXREALTORS.COM



FOR SALE

1950
STAFFORDSHIRE RD

MISSOURI CITY, TX 77489



AVAILABLE SPACE

Type	Size	Price
Land	+/-13.774 Acres	\$8.50 psf

DEMOGRAPHICS

	1 mile	3 mile
Population	11,742	100,352
Households	3,638	33,627
Median Age	37.30	38.40
Growth '21 - '26	↑ 16.86%	↑ 16.85%

INVESTMENT HIGHLIGHTS

Access off of Staffordshire Rd. Utilities provided by Missouri City through WCID #2. Close proximity to Hwy 90 and Beltway 8. Located in Fort Bend ISD. Perfect for Single family rental, townhomes, patio homes, industrial use.

TRAFFIC COUNTS

Collection St	Cross St	Traffic Vol	Last Mea	Distance
Columbia Blue Dr	Village PkDr SE	2,209	2022	0.30 mi
Columbia Blue Dr	Wildwood Ridge Dr	2,301	2022	0.34 mi
Staffordshire Rd	Constitution Ave SE	6,732	2022	0.36 mi
Staffordshire Rd	Independence Blvd SE	3,891	2022	0.36 mi
Court Rd	Valley Manor Dr E	3,265	2022	0.43 mi
Court Rd	Valley Manor Dr W	3,107	2022	0.43 mi

“AT APEX REALTORS, WE ARE NOT A 9-5,
WE ARE A START TO FINISH BUSINESS”

FARID CHATUR, DESIGNATED BROKER

APEX BROKERAGE LLC

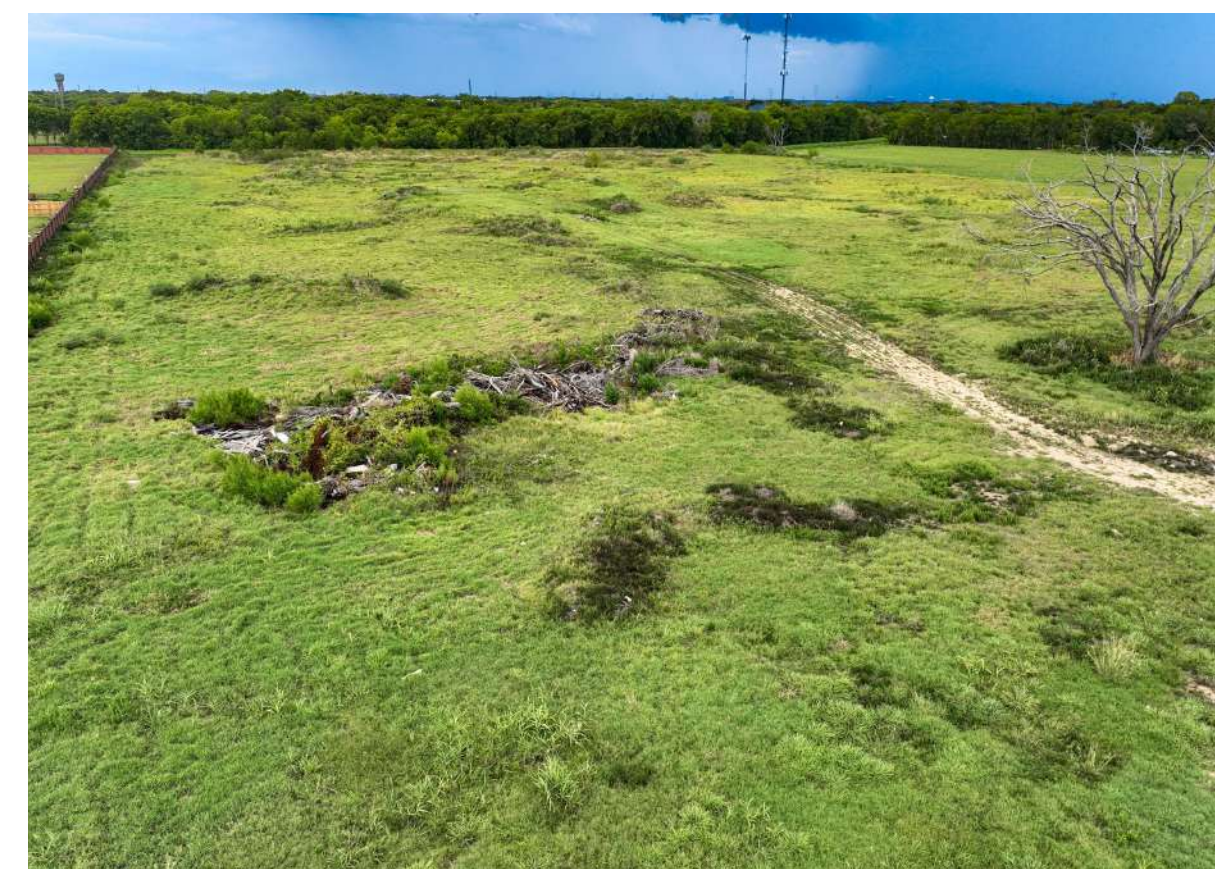
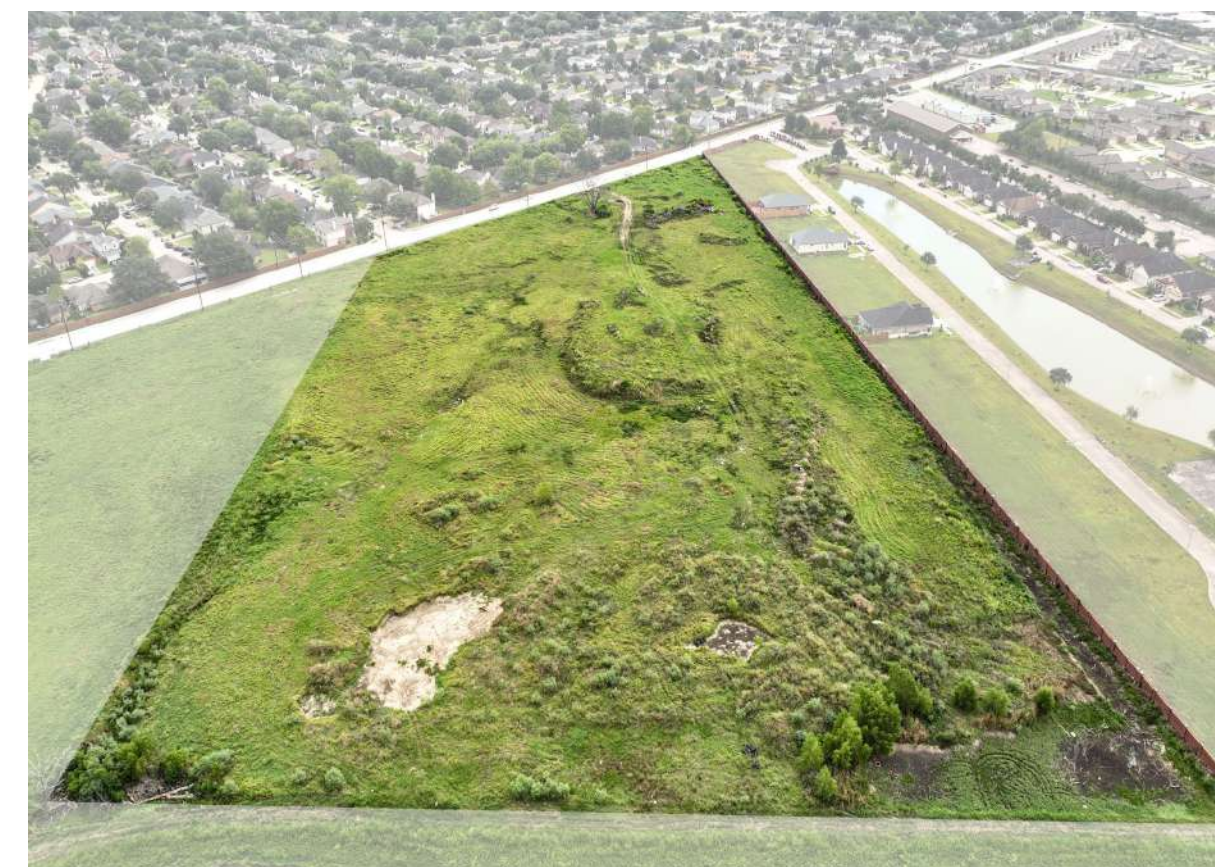
FOR MORE INFORMATION

832-685-APEX(2739)

FARID@APEXREALTORS.COM

PROPERTY HIGHLIGHTS

- Access off of Staffordshire Rd. Utilities provided by Missouri City through WCID #2.
- Close proximity to Hwy 90 and Beltway 8. Located in Fort Bend ISD.
- Perfect for Single family rental, townhomes, patio homes, industrial use.

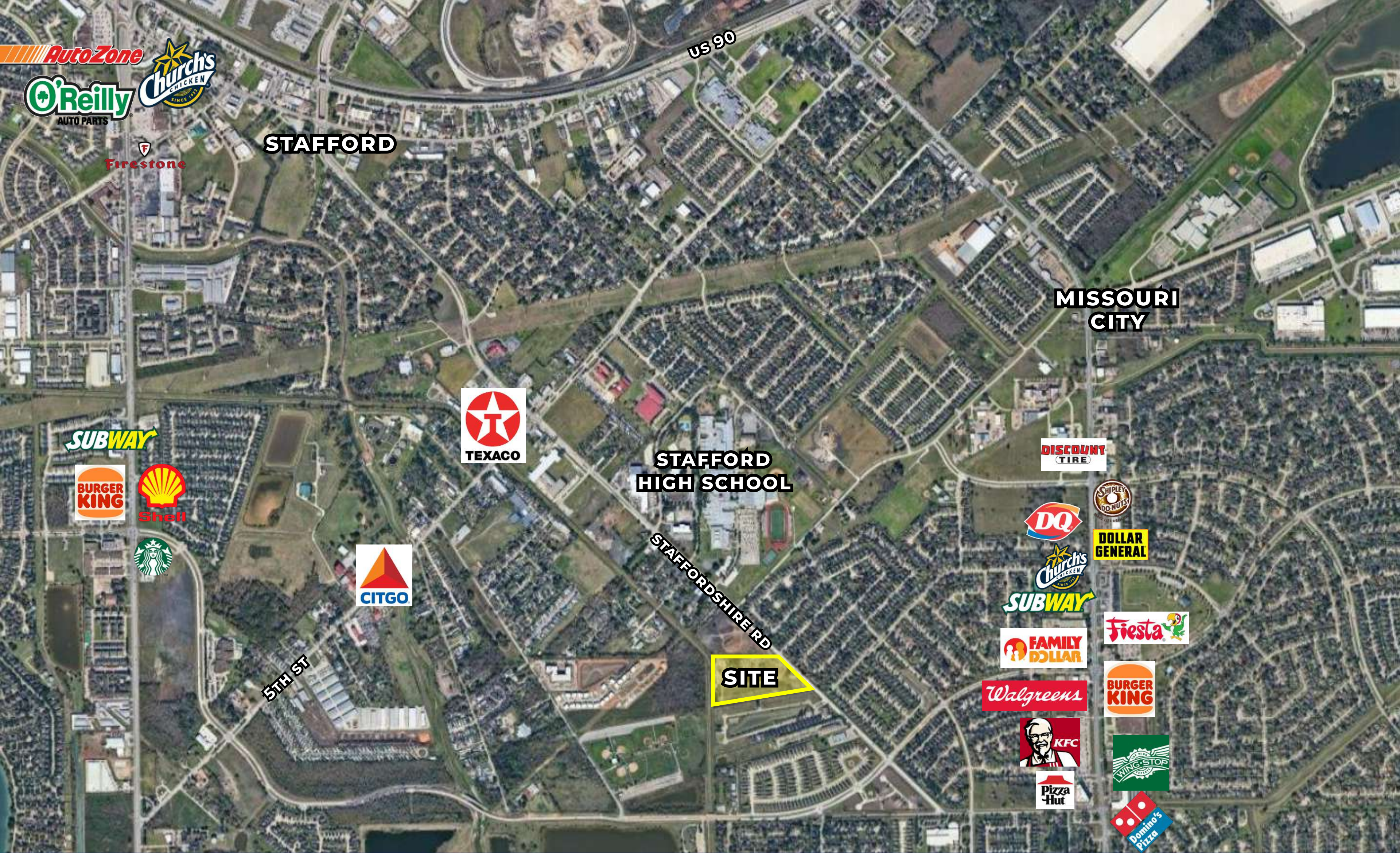


“AT APEX REALTORS, WE ARE NOT A 9-5,
WE ARE A START TO FINISH BUSINESS”

FARID CHATUR, DESIGNATED BROKER
APEX BROKERAGE LLC

FOR MORE INFORMATION

832-685-APEX(2739)
FARID@APEXREALTORS.COM



“AT APEX REALTORS, WE ARE NOT A 9-5,
WE ARE A START TO FINISH BUSINESS”

FOR MORE INFORMATION

FARID CHATUR, DESIGNATED BROKER
APEX BROKERAGE LLC

832-685-APEX(2739)
FARID@APEXREALTORS.COM